

State of Wyoming Corner Record

(In compliance with the *CORNER PERPETUATION AND FILING ACT*, Wyoming Statutes, 1997 Section 33-29-140 et. seq., and the Rules and Regulations of the Board of Professional Engineers and Professional Land Surveyors)



Reverse side of this form may be used if more space is needed.

RECORDED 1/20/2009 AT 11:11 AM REC# 514625 JK# 2091 PG# 677
DEBRA K. LATHROP, CLERK OF LARAMIE COUNTY, WY PAGE 1 OF 1

Record of original survey and citation of source of historical information (if corner is lost or obliterated). Description of corner monumentation evidence found and/or monument and accessories established to perpetuate the location of this corner. Sketch of relative location of monument, accessories, and reference points with course and distance to adjacent corner(s) (if determined in this survey). Method and rationale for reestablishment of lost or obliterated corner.

FOUND: FOUND: Nothing at the corner point. A corner recordation form was filed March 17, 1981, by Donald M. Hopkins, LS 558. No ties which would aid in the recovery of the monument were given on the recordation form. A cursory written description is all that was provided by Hopkins. Another corner recordation form was filed by Jeffrey B. Jones, PLS 5910, on August 1, 1991. Jones description of the monument does not agree with Hopkins description, implying the possibility of 2 different found monuments. Notably, Jones did not accept the position of the monument he found as being the true corner (see attached Affidavit of Survey for further explanation). Jones did set 3 reference points (recovered by this survey) but there are 1 or more errors in the record distances shown for the 3 ties, as there is no single mathematical solution when the measured ties are calculated. The 3 ties give 3 solutions, those solutions spaced several feet apart. Finally, construction of Pershing Boulevard appears to have destroyed whatever monumentation may have existed at any point in time.

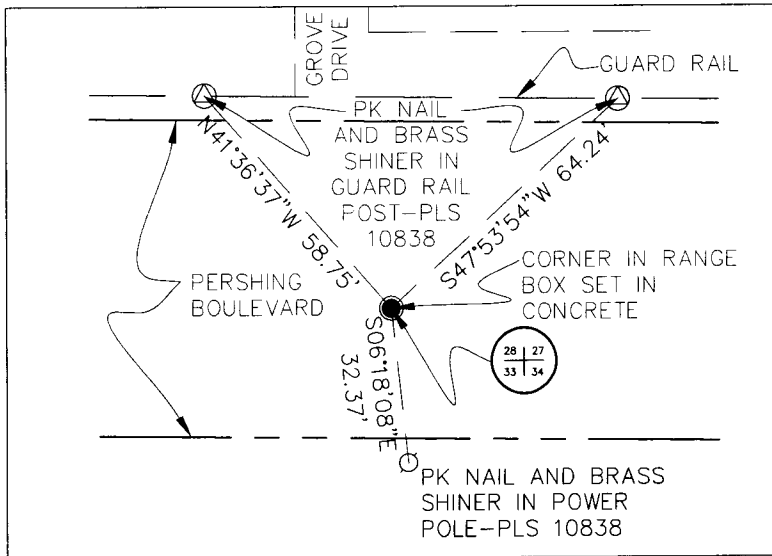
Note: See the attached Affidavit of Survey for a complete and thorough explanation of the re-establishment of this section corner

SET: SET: a 3.25 inch Aluminum Cap on a 30 inch by 3/4" inch rebar, the Cap stamped appropriately as the Section Corner common to Sections 27, 28, 33 and 34, T.14 N., R. 66 W. (see Monument Inscription for details). The monument is in a round iron range box, the box set in concrete, located approximately in the center of Pershing Boulevard, aligned with Grove Drive on the North side of Pershing Boulevard.

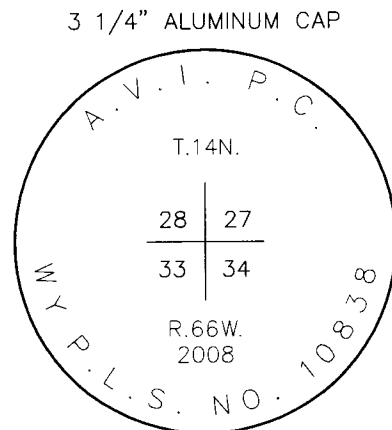
ADDITIONAL TIES: SE CORNER SEC. 28 TO SOUTH 1/4 CORNER SEC. 28 (FOUND BRASS CAP LS 3515) - N89°54'10.4" 2645.12 FEET.

SE CORNER SEC. 28 TO SOUTH 1/4 CORNER SEC. 27 (FOUND BRASS TABLET LS 2927) - S89°39'25.4"E, 2630.90 FEET

SE CORNER SEC. 28 TO SE CORNER OF SCHOOL LEASE (EAST HIGH PARCEL)
(1.5" ALUMINUM CAP PLS 10838) N48°43'45.3"W, 106.33 FEET



Monument location



Monument Inscription

Date of Field Work: DECEMBER 1, 2008 Office Reference: 2411

Cross Index Plat

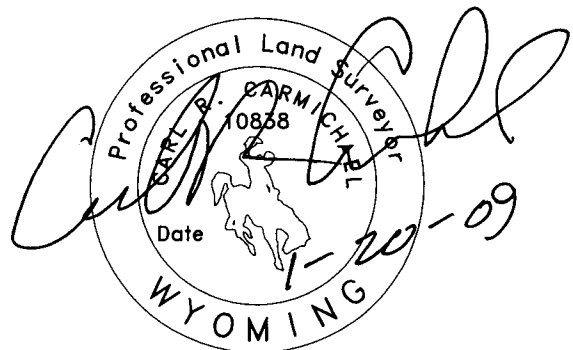
1	2	3	4	5	6	7	8	9	10	11	12	13	14	15	16	17	18	19	20	21	22	23	24	25
A	+	+	+	+	+	+	+	+	+	+	+	+	+	+	+	+	+	+	+	+	+	+	+	+
B	+	+	+	+	+	+	+	+	+	+	+	+	+	+	+	+	+	+	+	+	+	+	+	+
C	+	6	+	+	5	+	+	+	4	+	+	+	+	3	+	+	+	+	2	+	+	+	+	1
D	+	+	+	+	+	+	+	+	+	+	+	+	+	+	+	+	+	+	+	+	+	+	+	+
E	+	+	+	+	+	+	+	+	+	+	+	+	+	+	+	+	+	+	+	+	+	+	+	+
F	+	+	+	+	+	+	+	+	+	+	+	+	+	+	+	+	+	+	+	+	+	+	+	+
G	+	7	+	+	+	+	+	+	8	+	+	+	+	9	+	+	+	+	10	+	+	+	+	11
H	+	+	+	+	+	+	+	+	+	+	+	+	+	+	+	+	+	+	+	+	+	+	+	+
J	+	+	+	+	+	+	+	+	+	+	+	+	+	+	+	+	+	+	+	+	+	+	+	+
K	+	+	+	+	+	+	+	+	+	+	+	+	+	+	+	+	+	+	+	+	+	+	+	+
L	+	18	+	+	+	+	+	+	+	+	+	+	+	17	+	+	+	+	16	+	+	+	+	15
M	+	+	+	+	+	+	+	+	+	+	+	+	+	+	+	+	+	+	+	+	+	+	+	+
N	+	+	+	+	+	+	+	+	+	+	+	+	+	+	+	+	+	+	+	+	+	+	+	+
O	+	+	+	+	+	+	+	+	+	+	+	+	+	+	+	+	+	+	+	+	+	+	+	+
P	+	+	+	+	+	+	+	+	+	+	+	+	+	+	+	+	+	+	+	+	+	+	+	+
Q	+	+	+	+	+	+	+	+	+	+	+	+	+	+	+	+	+	+	+	+	+	+	+	+
R	+	+	+	+	+	+	+	+	+	+	+	+	+	+	+	+	+	+	+	+	+	+	+	+
S	+	+	+	+	+	+	+	+	+	+	+	+	+	+	+	+	+	+	+	+	+	+	+	+
T	+	+	+	+	+	+	+	+	+	+	+	+	+	+	+	+	+	+	+	+	+	+	+	+
U	+	+	+	+	+	+	+	+	+	+	+	+	+	+	+	+	+	+	+	+	+	+	+	+
V	+	+	+	+	+	+	+	+	+	+	+	+	+	+	+	+	+	+	+	+	+	+	+	+
W	+	+	+	+	+	+	+	+	+	+	+	+	+	+	+	+	+	+	+	+	+	+	+	+
X	+	+	+	+	+	+	+	+	+	+	+	+	+	+	+	+	+	+	+	+	+	+	+	+
Y	+	+	+	+	+	+	+	+	+	+	+	+	+	+	+	+	+	+	+	+	+	+	+	+
Z	+	+	+	+	+	+	+	+	+	+	+	+	+	+	+	+	+	+	+	+	+	+	+	+
1	2	3	4	5	6	7	8	9	10	11	12	13	14	15	16	17	18	19	20	21	22	23	24	25

Firm/Agency, Address

AVI p.c.
1103 OLD TOWN LANE
SUITE 101
CHEYENNE, WY. 82009
Telephone Number: 307-637-0617

This corner record was prepared by me or under my direction and supervision.

SEAL & SIGNATURE



IMPORTANT: SEE BOOK 2091 PAGE 673, AFFIDAVIT

Corner Name SECTION CORNER Section 28, T 14 N, R 66 W, 6th P.M. Cross-Index No.: V-13
County: LARAMIE Wyoming

SBRPEPLS/PLSW: March 1994; PLSW January 1998